

DL8306 DCF RCC 接收模组规格书

Radio Controlled Clock Receiver DCF Module DL8306



1. FEATURES

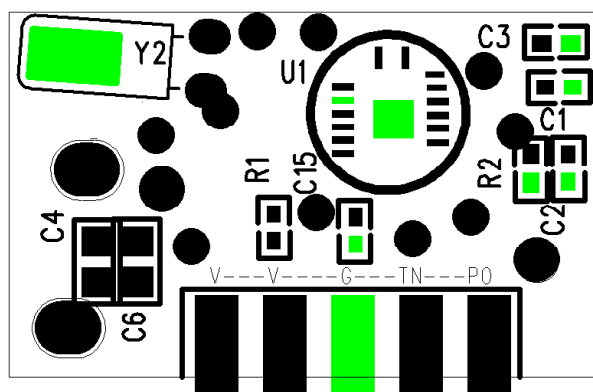
- . 高灵敏度 Very high sensitivity
- . 电源可控 power down mode available
- . 低功耗 low power consumption
- . 工作电压范围 operating supply voltage range: 1.2 to 5.0V
- . 工作电流 70uA—90uA 静态电流 1uA—3uA

2. SPECIFICATION

DCF 77.5KHZ (德国 DCF):

灵敏度 Sensitivity: 30dBuV

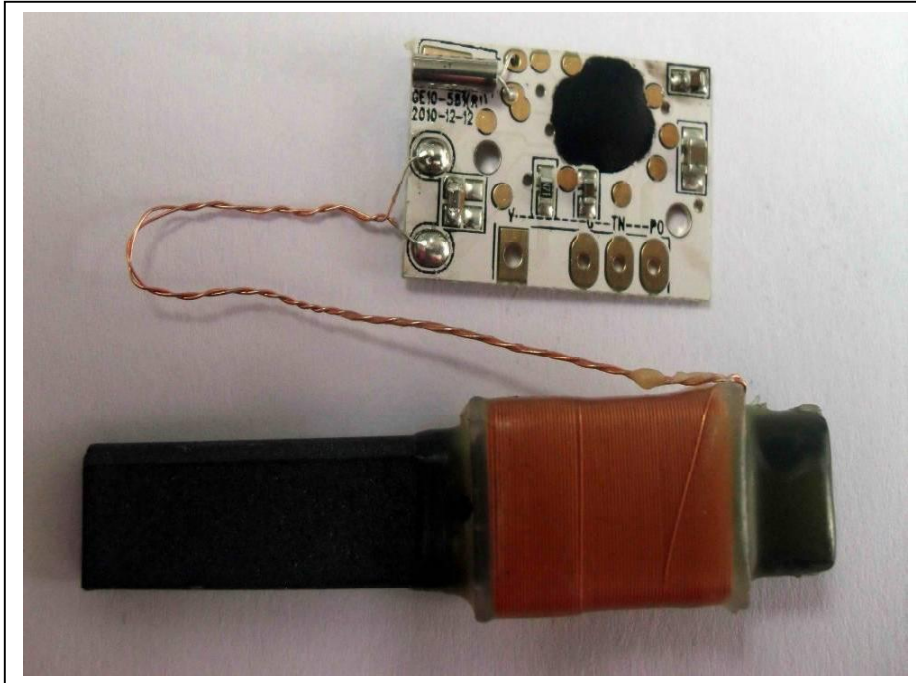
Antenna size (天线尺寸): 8x 50 mm 或者 3X8X50 mm



DL8306 DCF RCC 接收模组规格书

WWVB RCC 接收模组规格书

Radio Controlled Clock Receiver WWVB Module



2. FEATURES

- . 高灵敏度 Very high sensitivity
- . 电源可控 power down mode available
- . 低功耗 low power consumption
- . 工作电压范围 operating supply voltage range: 1.2 to 5.0V
- . 工作电流 70uA—90uA 静态电流 1uA—3uA

2. SPECIFICATION

WWVB 60 KHZ :

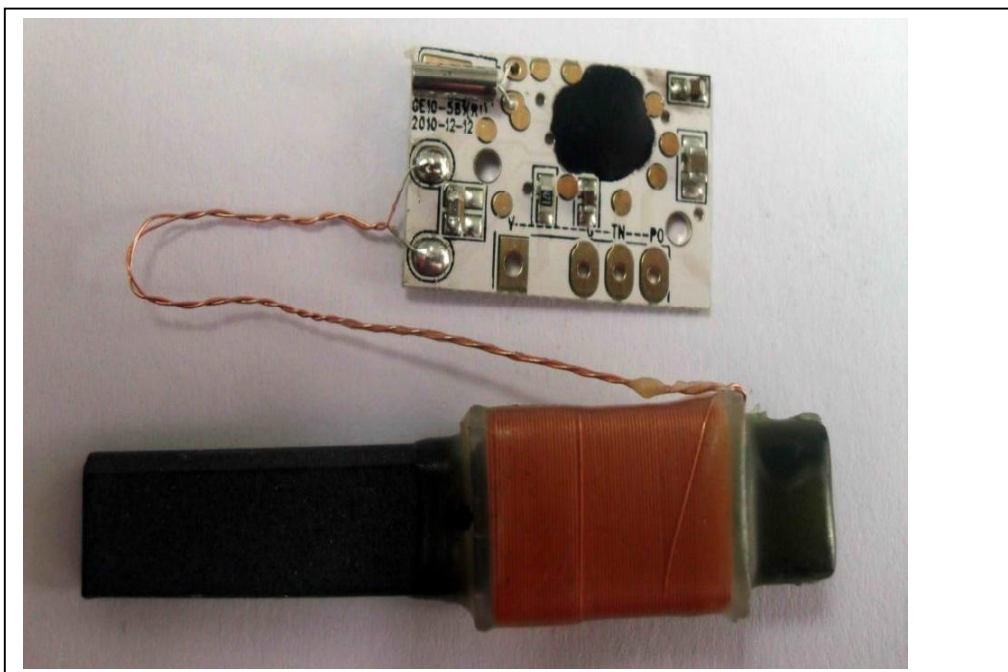
灵敏度 Sensitivity: 30dBuV

Antenna size (天线尺寸) : **8x50 mm 或者 3X8X50mm 或者 10X60mm**

DL8306 DCF RCC 接收模组规格书

MSF RCC 接收模组规格书

Radio Controlled Clock Receiver MSF Module



3. FEATURES

- . 高灵敏度 Very high sensitivity
- . 电源可控 power down mode available
- . 低功耗 low power consumption
- . 工作电压范围 operating supply voltage range: 1.2 to 5.0V
- . 工作电流 70uA—90uA 静态电流 1uA—3uA

2. SPECIFICATION

MSF 60 KHZ (MSF):

灵敏度 Sensitivity: 30dBuV

Antenna size (天线尺寸): 8x50 mm 或者 3X8X50mm , 8x 50mm 或者 10X60mm

60KHZ和77.5KHZ的两种做一起的，不用跳线，默认先接收一个制式，几分钟收不到就换另外一个